

13 OCTOBER 2021

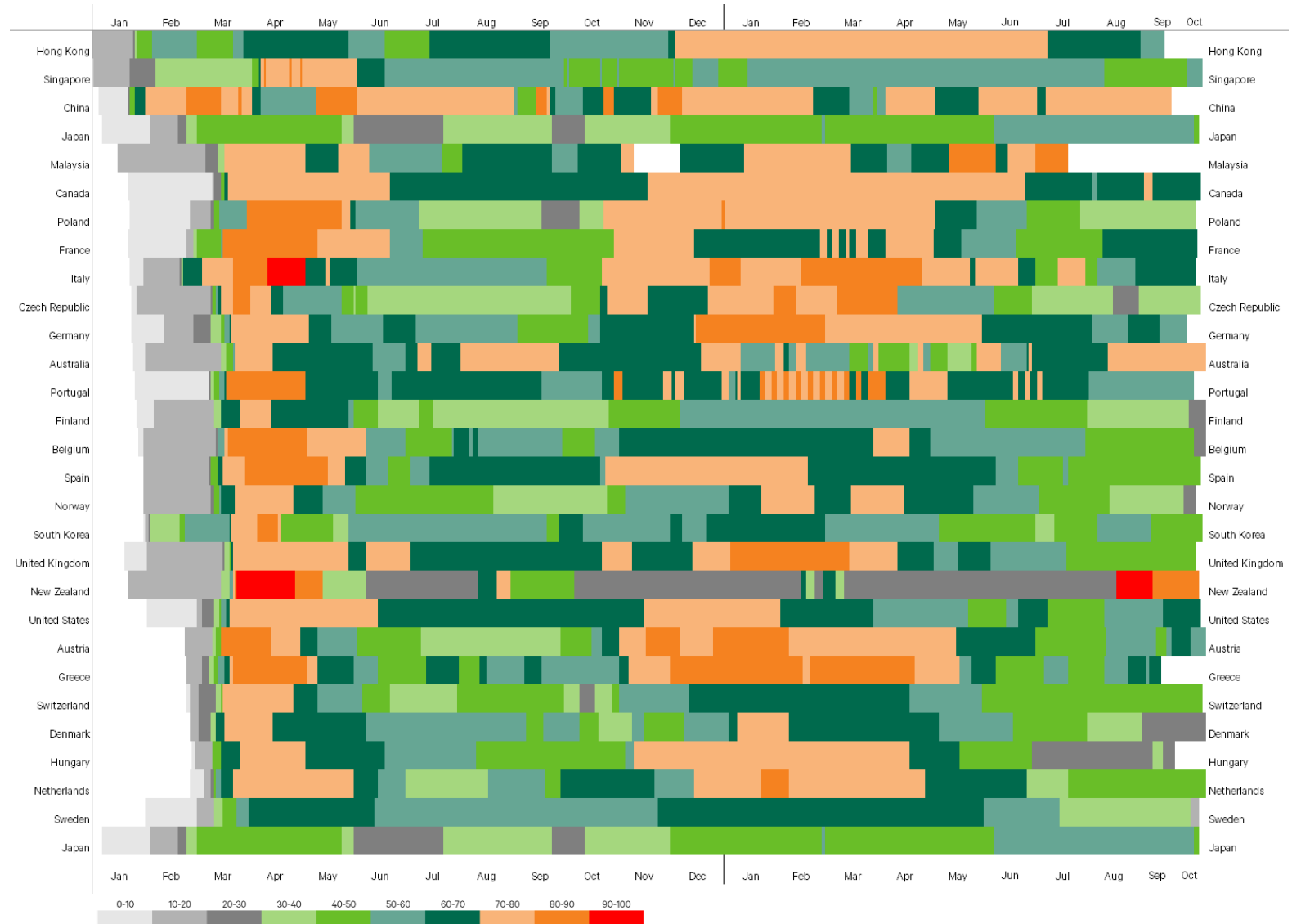
Global Pandemic Pulse

Monthly Economic Indicators:
13th October 2021

Global Economic Indicators: 13 October 2021

Figure 1
Source: Oxford Covid-19 Government Response Tracker, Blavatnik School of Government, Oxford University
*Latest available data. Note that these indices simply record the number and strictness of government policies, and should not be interpreted as 'scoring' the appropriateness or effectiveness of a country's response. A higher position in an index does not necessarily mean that a country's response is 'better' than others lower on the index, Methodology: <https://www.bsg.ox.ac.uk/research/publications/variation-government-responses-covid-19>
Latest data to 08/10

Figure 1: Australia and New Zealand are currently facing the toughest restrictions globally
Lockdown Stringency Index*



Global Economic Indicators: 13 October 2021

Figure 2: South Korea has seen workplace numbers plummet despite being close to pre-pandemic levels

Workplace mobility by European countries, relative to baseline* (%) 7 day moving average

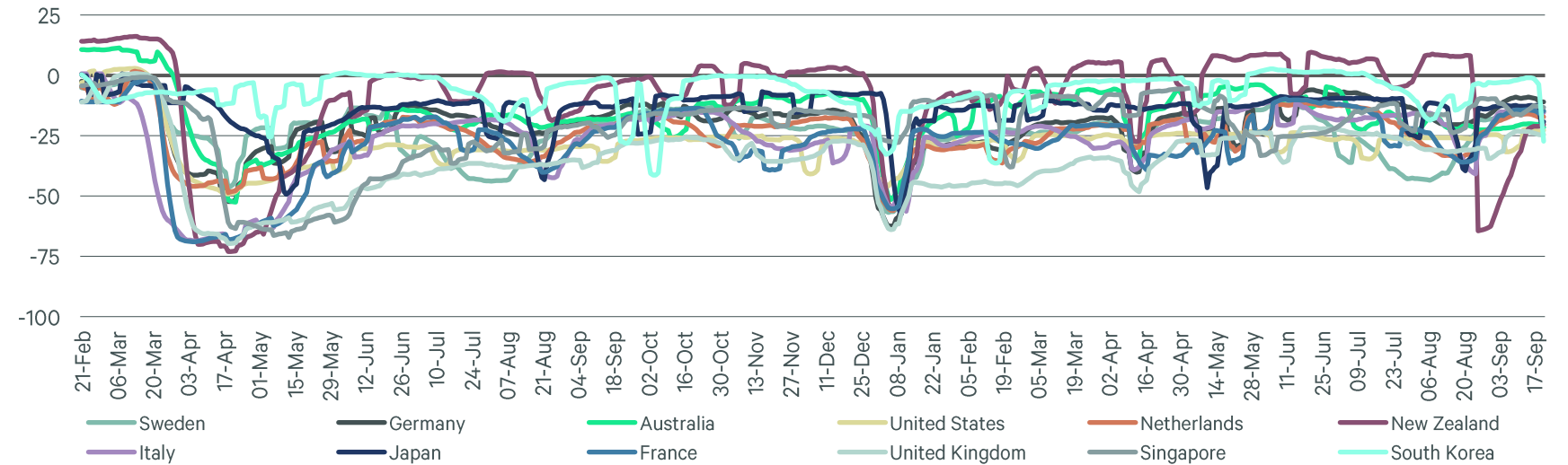


Figure 3: Wall Street's return buoys New York recovery

The Pret Index* (weekly transaction volumes change (w/w ppt))

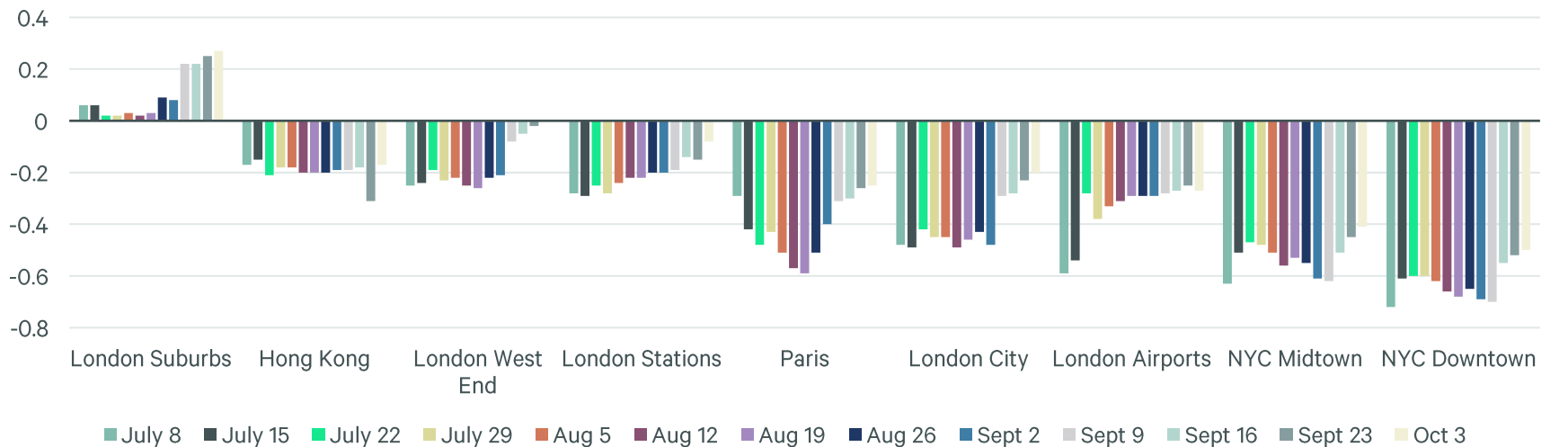


Figure 2:
Source: Google Mobility
*Baseline day definition: The data shows how visitors to (or time spent in) categorized places change compared to our baseline days. A baseline day represents a normal value for that day of the week. The baseline day is the median value from the 5-week period Jan 3 – Feb 6, 2020.
Latest data to 03/10

Figure 3:
Source: Bloomberg
*Index comparing to pre-pandemic levels (Jan-20)
Latest data to 03/10

Global Economic Indicators: 13 October 2021

Figure 4: European logistics had a small reversal recently, meanwhile German residential has improved

Implied cap rates, %*

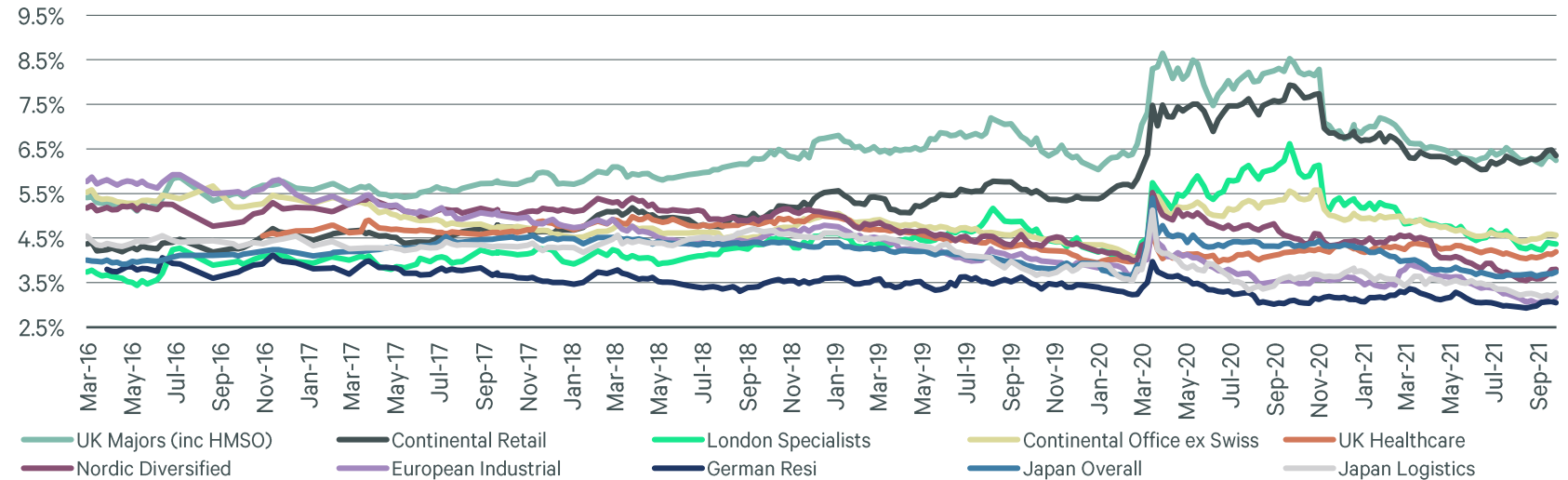


Figure 5: High vaccine uptake in developed countries as children are receiving their first dose

People Fully Vaccinated* as a % of Total Population

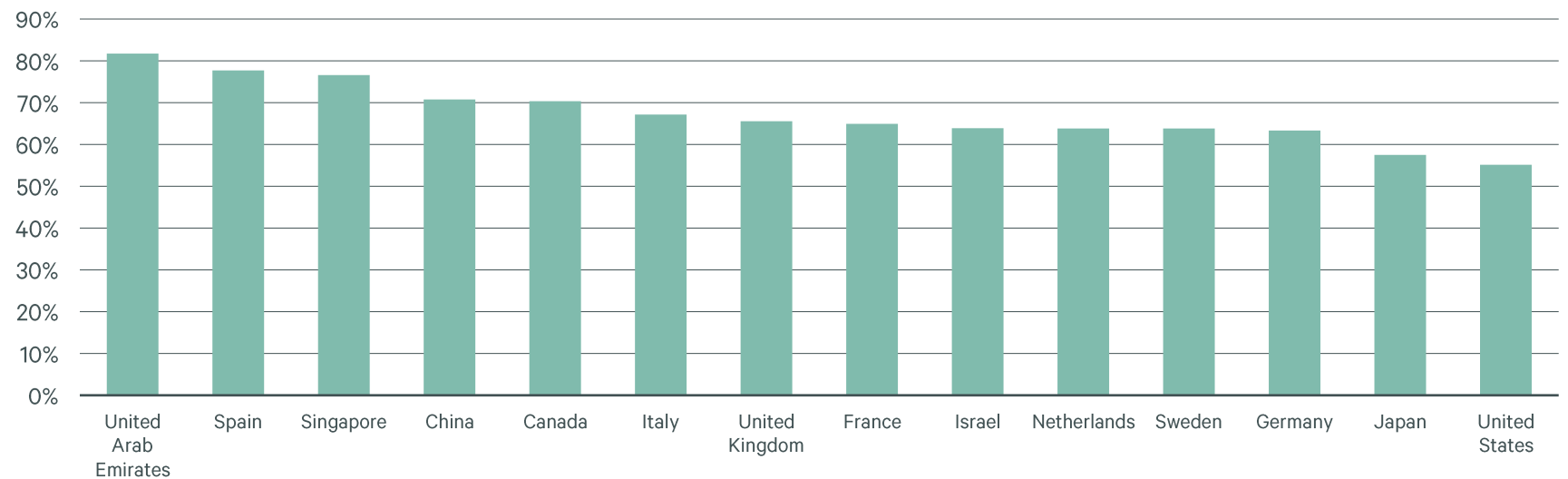


Figure 4:
Source: CBRE Clarion, Daiwa Securities
*Data is free float market cap weighted by stock
Latest data to 27/09

Figure 5:
Source: Our World in Data
*Recall that most vaccines require two doses
Latest data to 7/10

Global Economic Indicators: 13 October 2021

Figure 6: Low footfall into retail destination in Auckland as strict lockdown is still in place in New Zealand's capital
Retail and recreation mobility by European countries vs. their capital cities, relative to baseline* (%) 7-day moving average

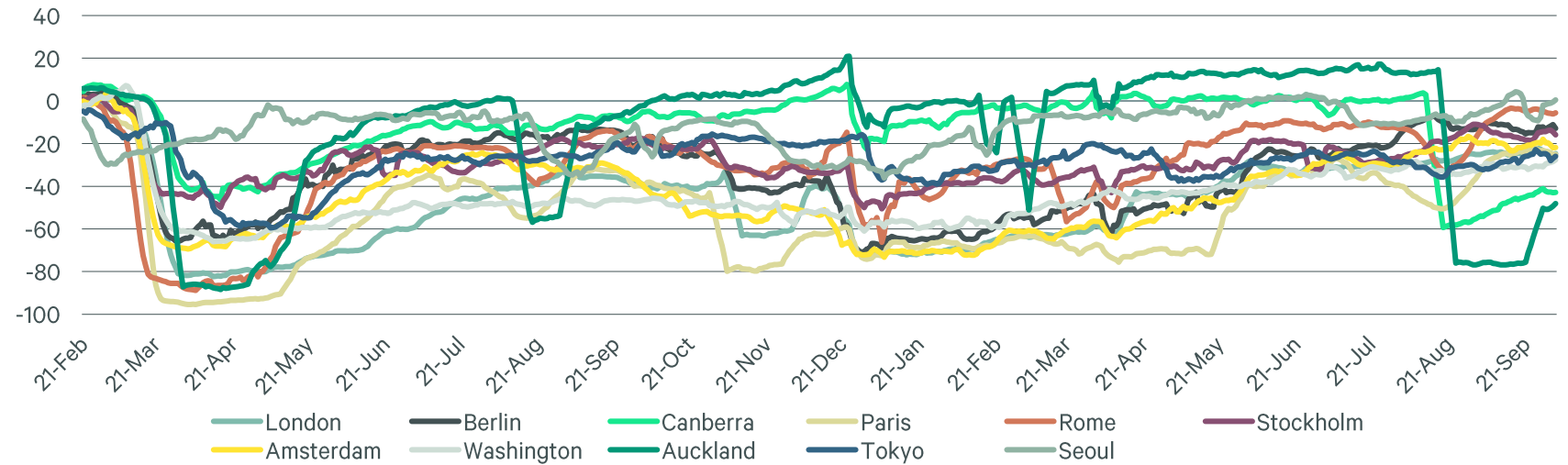


Figure 7: Passenger data suggests the return of the real estate conference, starting with EXPO in Munich
Tracked Flights, Index, May 18th 2021 = 100

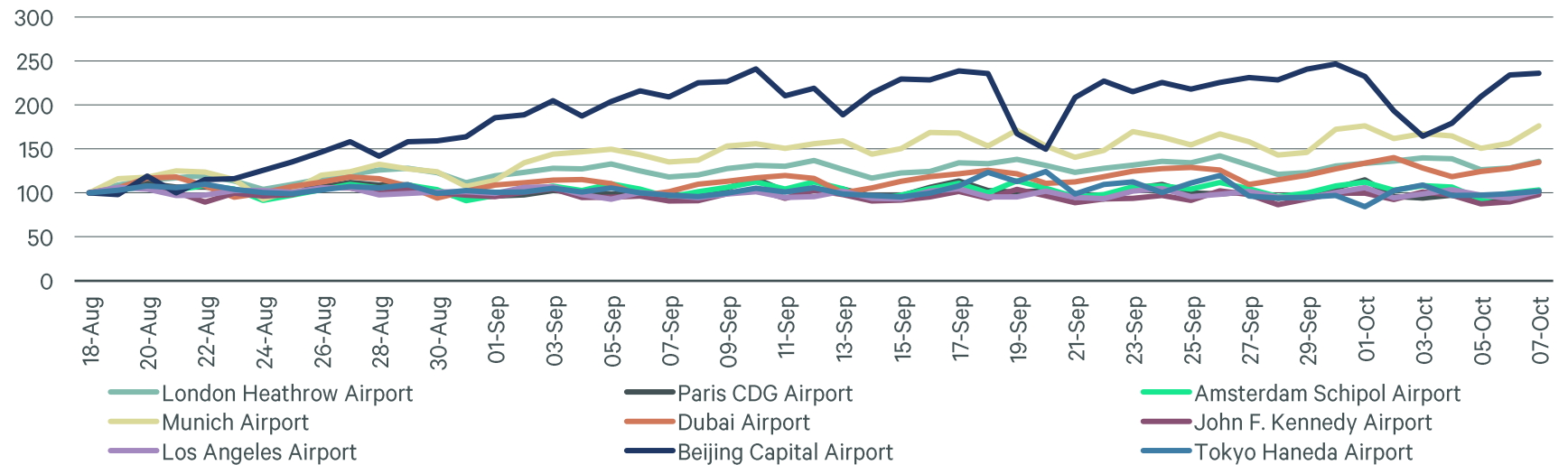


Figure 6:
Source: Google Mobility
*Baseline day definition: The data shows how visitors to (or time spent in) categorized places change compared to our baseline days. A baseline day represents a normal value for that day of the week. The baseline day is the median value from the 5-week period Jan 3 – Feb 6, 2020.
Latest data to 03/10

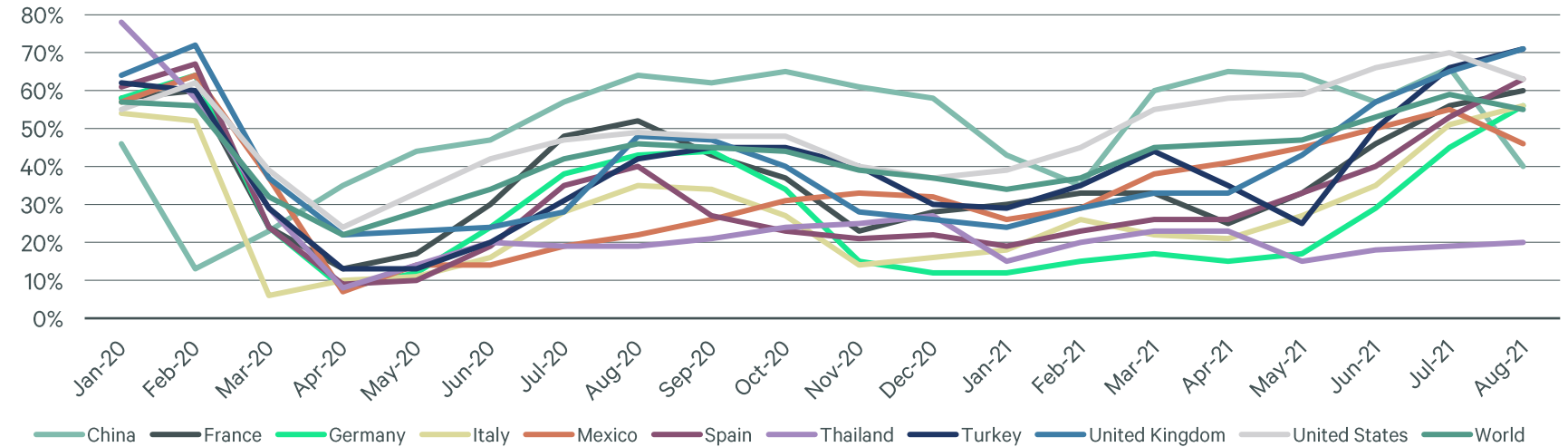
Figure 7:
Source: Flightradar24.com
Latest data to 07/10

Global Economic Indicators: 13 October 2021

GLOBAL PANDEMIC PULSE

Figure 8: Occupancy rates in most of destinations in Europe and US recovers to pre-pandemic level

Hotel Occupancy Rates by Top 10 Destinations



For more information:

Sophie Kao
VICE PRESIDENT REAL ASSETS
RESEARCH

T: +8621 2035 8076
sophie.kao@cbreim.com

Maria Wiklund
SENIOR ANALYST REAL ASSETS
RESEARCH

T: +44 (0)20 7809 9117
maria.wiklund@cbreim.com

Figure 8:
Source: STR, UNWTO Tourism Recovery Tracker
*Percentage of available rooms sold during a specified time period. Occupancy is calculated by dividing the number of rooms sold by rooms available.
Latest data to 31/08

Please note that the content of this report is for informational purposes only and should not be viewed as investment advice or an offer or solicitation. Any opinions are solely those of the Real Assets Research Team of CBRE Investment Management and are subject to change without notice, and may not be consistent with market trends or future events. This research is based on current public information that we consider reliable, but we do not represent it as accurate, updated or complete, and it should not be relied on as such. Copyright © 2021, CBRE Investment Management, LLC. All rights reserved.